

SESD 270

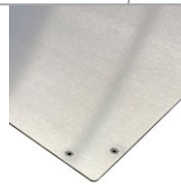
Ground reference plane, HCP - Horizontal coupling plane

Different IEC and ISO standards,
e. g. IEC / EN 61000-4-2, -4-4, -4-5, -4-6,
ISO 10605

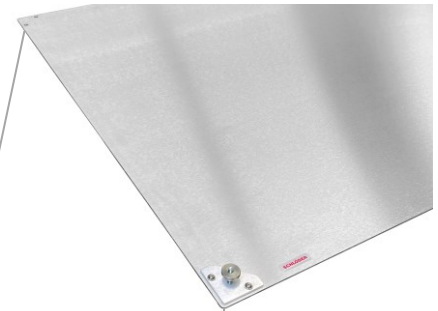
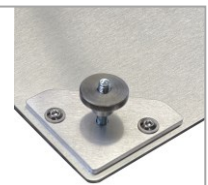
- Ground reference plane for tests according to different IEC and ISO standards
- Lasered version
- Main plate with ground connectors, press-fit bolts and knurled nut

Ground reference plane with rounded edges!

Mounting for ground connection piece



Ground connection piece with high knurled nut



Overview

The ground reference plane is suitable for different ESD-tests, Surge, Burst/EFT and conducted immunity tests according to IEC and ISO standards.

Two-part design with main plane, aluminum connection pieces with press-fit bolts and matching knurled nut.

In each corner there is a receptacle for a ground connection piece for the flexible production of large-area ground reference points.

The mechanical matting ensures a uniform diffuse surface structure for optimum contacting.

The rounded edges prevent injuries.

Technical data

SESD 270

Main plane	2 x insert nut M4 per corner
Ground connection piece	with 2 x through hole for screwing on main plate, press-in bolt M5 + high knurled nut M5
Material	
Main plane	Aluminum (AlMg3)
Ground connection piece	Aluminum (AlMg3)
Press-in bolt	Galvanized steel
Knurled nut	Stainless steel V2A

Dimensions

Main plane	1600 x 800 x 3 mm
Ground connection piece	30 x 30 x 3 mm
Press-in bolt	M5 x 20 mm
Weight	appr. 11 kg

All information regarding appearance and technical data correspond to the current state of development at the time of release of this data sheet. We reserve the right to make technical changes.

032202

