



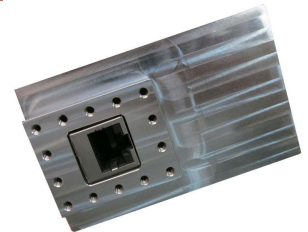
Wireless RF Test Enclosures

JRE LAN-1 RJ-45 ETHERNET FILTERED INTERFACE

Easily test Ethernet connected devices in an RF Shielded test environment. Latest design includes new LTE cellular bands.

- Passes Ethernet 10/100/1000 signals while rejecting Cellular, WiFi & other signals above 700 MHz
- All eight RJ-45 lines are filtered, useful for LAN as well as other applications!
- Over 80 db attenuation beyond 800 MHz
- Balanced filtering for minimal ringing

The LAN-1 Filter consists of a 10/100/1000 Ethernet compliant low pass filter inside a machined aluminum housing which provides exceptional RF shielding on all 8 signal lines, making it compatible with standard Ethernet as well as any other format using an RJ-45 connector. The filter is designed to reject frequencies greater than the Cellular frequencies of 700 MHz while passing data between RJ-45 connected devices such as routers, switches, access points or other Ethernet devices. Since all 8 signal lines are filtered (10/100 Ethernet uses only 4 of the 8 available signal lines, while 1000 uses all 8 lines) one can use this filter as an interface to connect various other devices within the test enclosure. Standard RJ-45 jacks are used, so one may wire any signal on to any of the eight lines and pass it across the filter, knowing that anything below 480 MHz will pass and signals above 700 MHz will be attenuated by greater than 70dB. The LAN-1 interface consists of balanced pairs of bi-directional data lines on all connector pins. Standard RJ-45 Ethernet LAN connectors are used allowing simple and reliable connection to your devices. The data line filters pass up to 480 Mbps of data while providing rejection greater than 80dB from 1 GHz through 6 GHz. The use of high performance inductors allows a current of up to 250 mA and a DC resistance on any path below 1.5 ohms.



FEATURES & BENEFITS

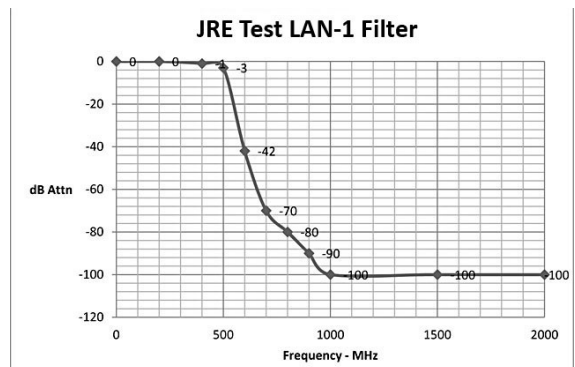
- Reduces interference from Cellular, LTE and WiFi
- Heavy duty machined aluminum case for reliable shielding
- Precision designed filtering for minimal ringing on data lines

SPECIFICATIONS:

Data Line Balanced Impedance: 100 Ohms typ.
 Typical Insertion Loss (data lines):
 10 MHz 0.1 dB
 250 MHz 1.5 dB
 350 MHz 2.0 dB
 480 MHz 3.0 dB
 800 MHz – 6 GHz > 80 dB
 DC Power lines: 0.1 ohms DC, -3 db @ 10 MHz,
 > -60 @ 100 MHz, > -80 db 400 MHz to 6 GHz

DIMENSIONS

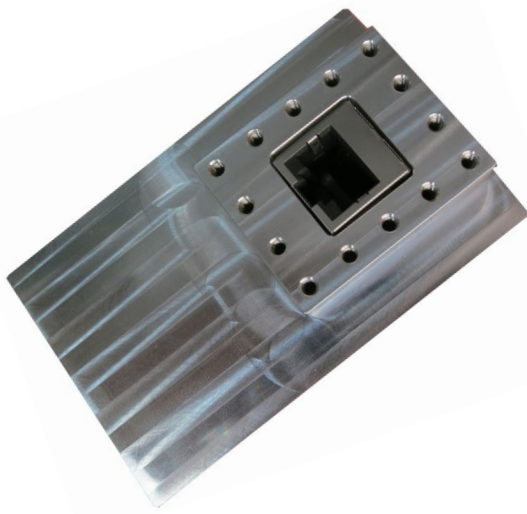
Outside: 2" H x 3.2" W x 0.8" D 50 x 80 x 20 mm



JRE LAN-1 RJ-45 Ethernet Filtered Interface Adapter

- RJ-45 Female Jacks
- Filtering: All lines filtered
- Power capability: Up to 60 VDC at 250 mA, 1.5 ohms max DC resistance

JRE Test, LLC 7940 Rae Blvd. Victor, NY 14564
www.jretest.com 585-298-9596 sales@jretest.com



JRE Test LAN-1 Filter

