



Wireless RF Test Enclosures

JRE LAN10G-USB 3 Ethernet & USB 3 FILTERED INTERFACE

Test both 10G Ethernet and USB 3 devices in an RF Shielded test environment. Innovative new Patented design is NOT a low pass filter - which can impact data signals.

- Space and cost saving with two filters in one housing
- Patented design utilizes new approach to filtering high speed data
- 10GBASE-T Ethernet speeds as well as 2.5G and 5G BASE-T
- All USB data speeds, USB1, 2, and 3.0 'SuperSpeed'
- 80 db isolation in test system from 50 MHz to over 6 GHz

These data filters operate on an entirely new principle in data signal filtering. Previous filter designs used low pass filtering on the data lines to attenuate interfering wireless RF signals - however, as data speeds have increased, the data signals fall within the same frequency range as the interfering signals. Thus, simple low pass filtering cannot be used since such a filter will attenuate both the data and the interference.

Our Patented design uses an innovative application of signal phasing techniques and topology to filter out all RF signals except for the desired data signals. This ability to discriminate between data signals and undesired RF signals is especially valuable when testing at both Ethernet 10GBASE-T and USB 3 Super Speed data rates (since the signaling rate falls within Wireless signal frequencies), or when testing devices where the potential RF interfering frequencies fall within the pass band of a low pass filtered interfaces (such as wireless keyfobs or RFID devices).

Fully USB3 and Ethernet 10GBASE-T compliant, correct enumeration process ensures any test 'hiccups' will be properly exchanged between devices, ie: no hang-ups are undetected, a problem when using fiber optic or other such interfaces. The filter 'appears' to the connected devices as just a meter or two longer data cable. Cables included are USB Type A 1 meter long M-M, and Ethernet RJ-45 1 meter M-M.

FEATURES & BENEFITS

- Patented design discerns between data and RF signals
- Heavy duty machined aluminum case for reliable shielding
- Extremely wideband, from low VHF through microwave
- Multiple points of attachment secures without filter rotation or loosening
- Ethernet PoE power passing compatible

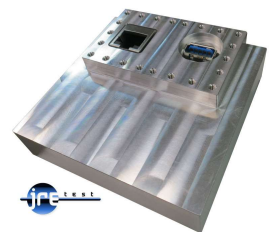
SPECIFICATIONS:

Data Line Balanced Impedance: 90-100 Ohms typical

Insertion loss: Data lines 5 dB, DC resistance 0.1 ohms, 1 A, 60V

DIMENSIONS

Outside: 3.2" H x 3.2" W x 0.8" D 80 x 80 x 20 mm



JRE LAN10G-USB 3 Filtered Interface Adapter

- LAN section: RJ-45 Female jacks
- USB section: USB Type A connectors
- Cables included: USB type A 1 meter long M-M, Ethernet RJ-45 1 meter M-M
- Power capability: Up to 60 VDC at 1 amp, 0.1 ohms max DC resistance

JRE Test, LLC 7940 Rae Blvd. Victor, NY 14564
www.jretest.com 585-298-9596 sales@jretest.com

